

# Field Trips I

## Tuesday, May 21

10:00–12:00 **Foodsaving in Heidelberg**  
Start & End Universitätsplatz

14:30–16:30 **Energy Storage and Wood-Fired Power Station Pfaffengrund**

Start Heidelberg Central Station  
End Bismarckplatz  
Transfer Public transport



© LAVA Architekten Berlin/Stadtwerke Heidelberg

15:00–17:15 **Heidelberg Bahnstadt: A whole Neighbourhood built in Passive House Standard**

Start & End Heidelberg Central Station

15:00–17:30 **Louise Otto Peters School – A climate-neutral educational Building**

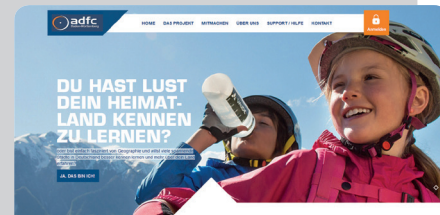
Start & End Heidelberg Central Station  
Transfer Bus shuttle to Hockenheim



© Kay Sommer

15:00–18:30 **Sustainable Management in Companies, B&S Service GmbH**

Stand & End Heidelberg Central Station  
Transfer Bus shuttle to Sinsheim



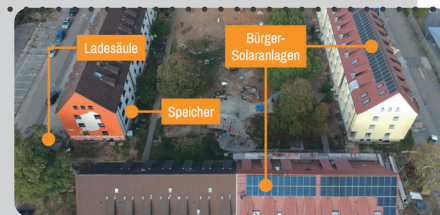
Willkommen bei Stadt-Land-Rad einem Projekt des ADFC  
© ADFC Heidelberg

15:30–17:00 **Stadt-Land-Rad Project – A guided Bicycle Tour through Heidelberg**

Start & End Universitätsplatz

15:30–17:30 **Renewable Energy Cooperatives, District Supply Heidelberg-Südstadt**

Start Heidelberg Central Station  
End Heidelberg Bismarckplatz,  
Transfer Public transport



© Heidelberger Energiegenossenschaft

15:45–17:30 **Centre for Environmentally Conscious Mobility (ZUM)**

Start & End Heidelberg Central Station

16:30–18:00 **Electromobility in Theory and Practice**

Start & End Universitätsplatz

# Field Trips II

## Thursday, May 23

16:00–17:00 **Solar Boat Trip**  
Start & End Kongresshaus Stadhalle Heidelberg

16:00–17:30 **Electromobility in Theory and Practice**  
Start & End Universitätsplatz

16:00–17:30 **Stadt-Land-Rad Project – A guided Bicycle Tour through Heidelberg**

Start & End Universitätsplatz



© Georg Eysel-Zahl

16:00–18:15 **Bahnstadt Heidelberg – A whole Neighbourhood built in Passive House Standard**

Start Kongresshaus Stadhalle Heidelberg  
End Heidelberg Central Station  
Transfer Bus shuttle to Bahnstadt



© TransitionHaus

16:00–18:15 **Wandelgarten and TransitionHaus – Local Climate Protection Projects**

Start Kongresshaus Stadhalle Heidelberg  
End Heidelberg Central Station  
Transfer Bus shuttle to Kirchheim

16:00–18:15 **Terraced Garden of Monastery Stift Neuburg – Biodiverse Planting**

Start Kongresshaus Stadhalle Heidelberg  
End Heidelberg Central Station  
Transfer Public transport to the Monastery Stift Neuburg



© Landratsamt Rhein-Neckar-Kreis

16:00–18:45 **Louise Otto Peters School – A climate-neutral educational Building**

Start Kongresshaus Stadhalle Heidelberg  
End Heidelberg Central Station  
Transfer Bus shuttle to Hockenheim



© Sonja Maria Kaas

16:00–19:00 **Digital solutions for future Cities: ABB Stotz Kontakt**

Start Kongresshaus Stadhalle Heidelberg  
End Heidelberg Central Station  
Transfer Public transport

16:00–19:00 **Sustainable Management in Companies, B&S Service GmbH**

Start Kongresshaus Stadhalle Heidelberg  
End Heidelberg Central Station  
Transfer Bus shuttle to Sinsheim

16:00–19:00 **Heidelberg Brewery**

Start Kongresshaus Stadhalle Heidelberg  
End Heidelberg Central Station  
Transfer Public transport